



PHOTO 1



PHOTO 2

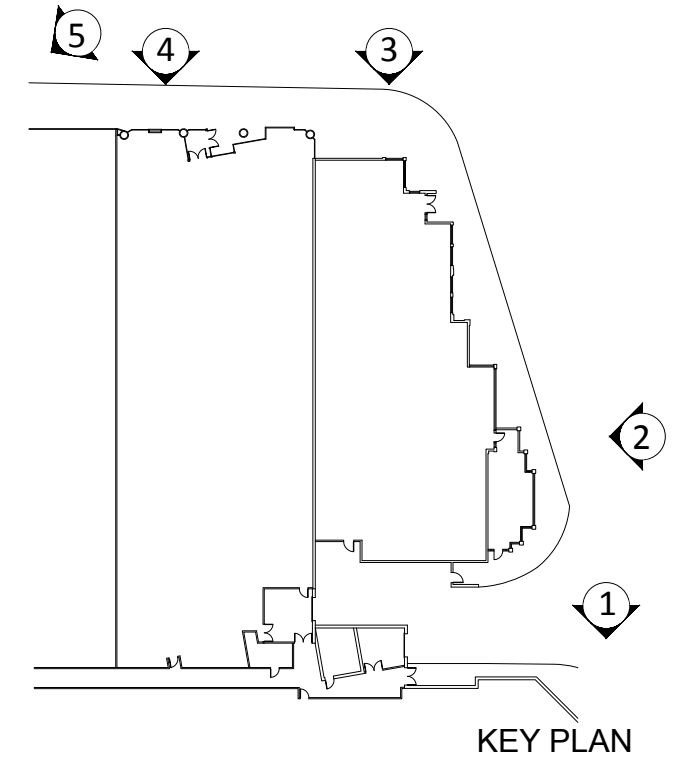


PHOTO 3



PHOTO 4



PHOTO 5

## PHOTOGRAPHS OF EXISTING CONDITIONS





**PHOTOGRAPHS OF A PROTOYPICAL STAPLES**  
(FOR REFERENCE ONLY)

EIFS 1  
TO MATCH BENJAMIN MOORE  
BRANDON BEIGE, 977

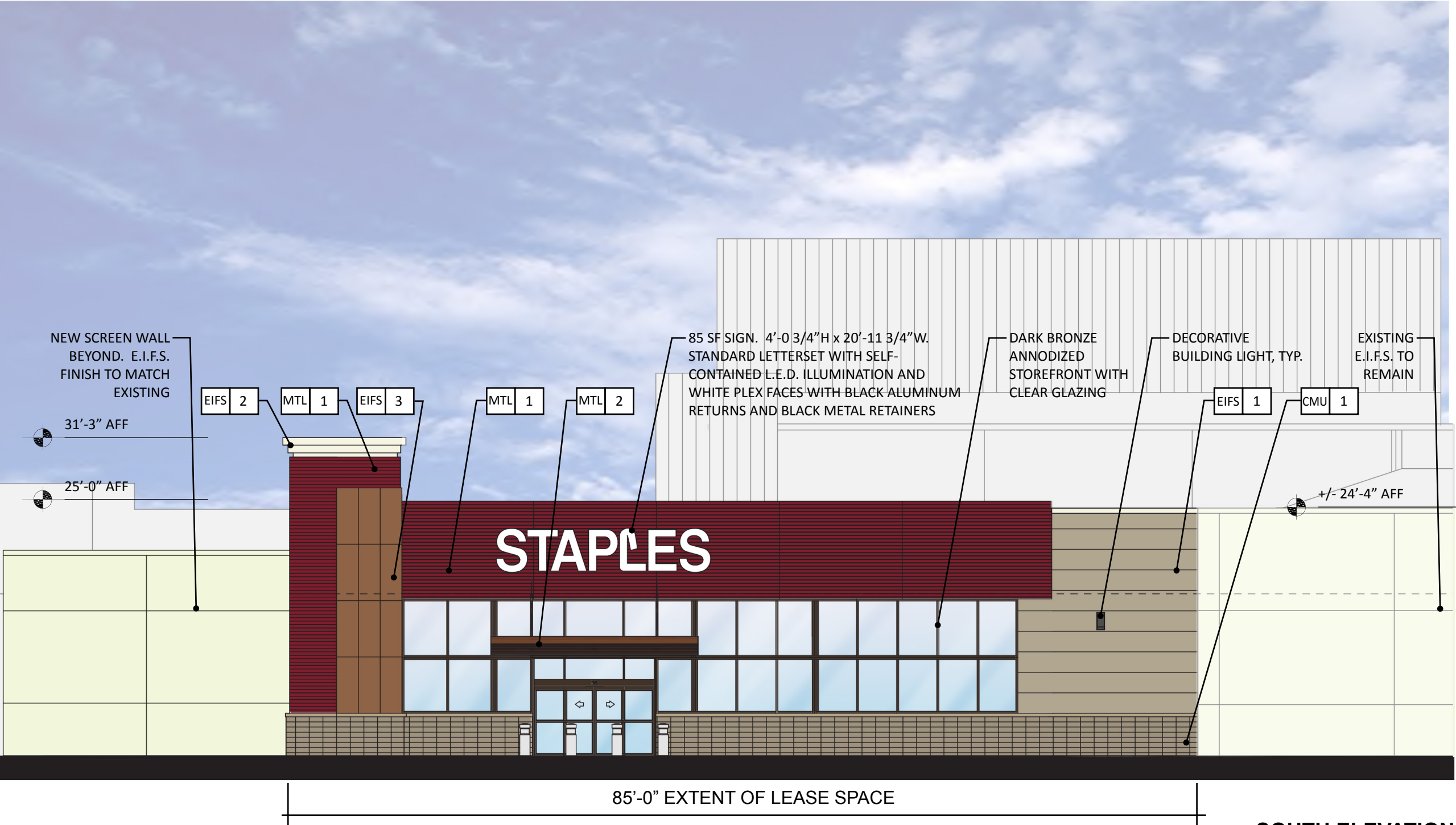
EIFS 2  
TO MATCH BENJAMIN MOORE  
ALPINE WHITE, 2147-70

EIFS 3  
TO MATCH BENJAMIN MOORE  
PONY BROWN, 2163-20

CMU 1  
SPLIT FACE CMU BLOCK  
12" L x 4" W x 4" H  
PAINT BENJAMIN MOORE  
RACCOON HOLLOW, 978

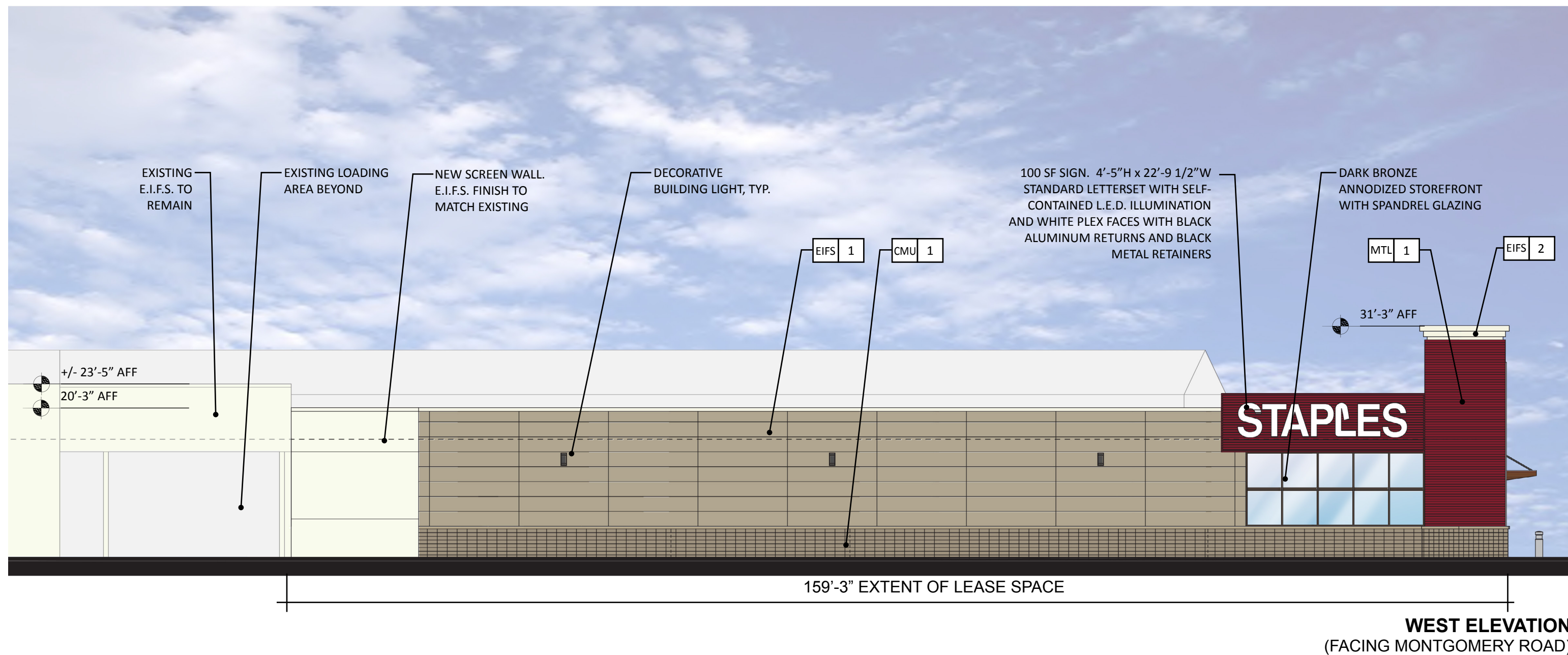
MTL 1  
RAIN SCREEN PANEL  
ATAS, BELVEDERE RIB SIDING  
PANEL; BRIGHT RED, 17

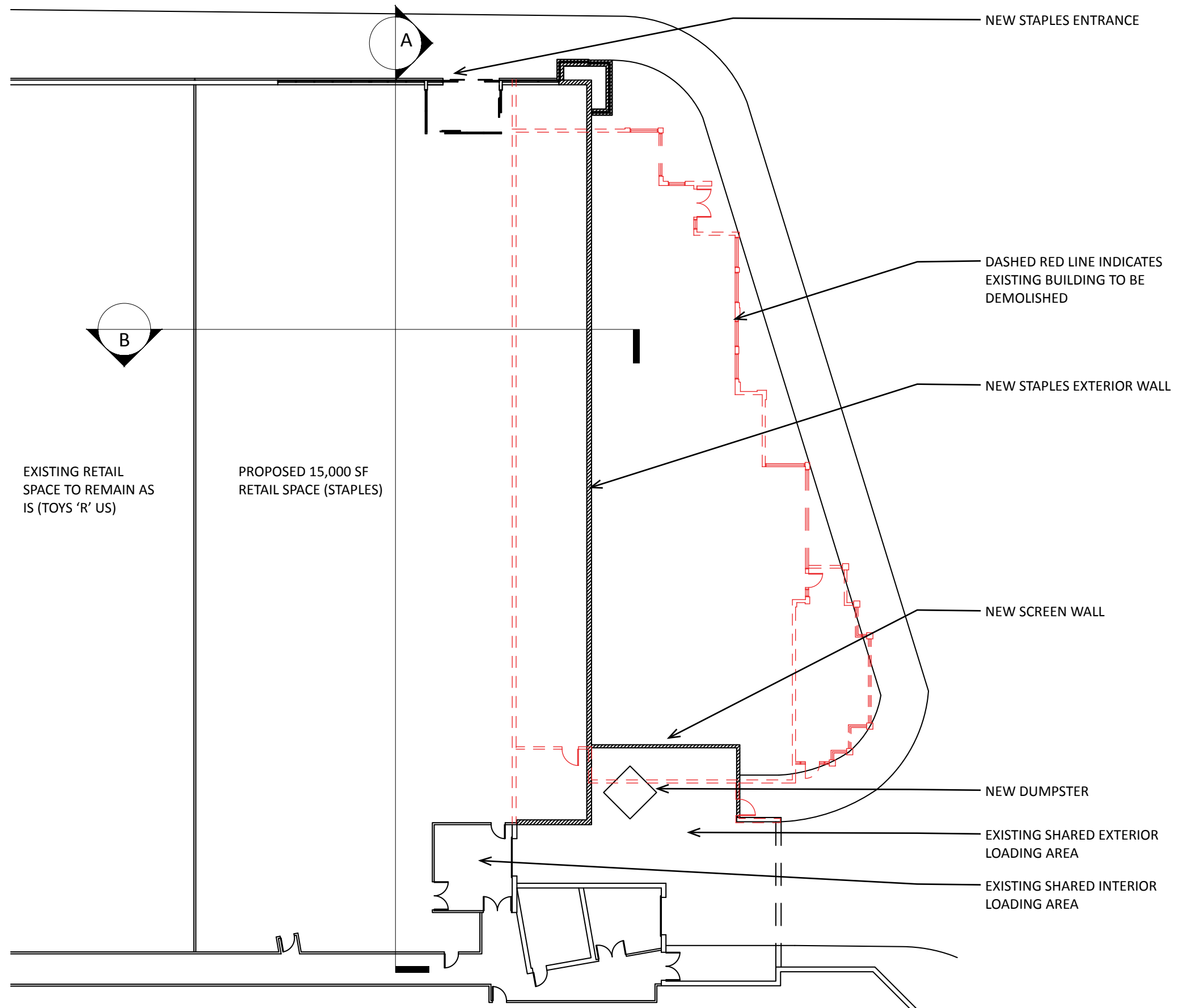
MTL 2  
ALCOA REYNOBOND ACM  
ITALIAN WALNUT



**SOUTH ELEVATION**  
(FACING KENWOOD ROAD)







**PROPOSED PLAN**

